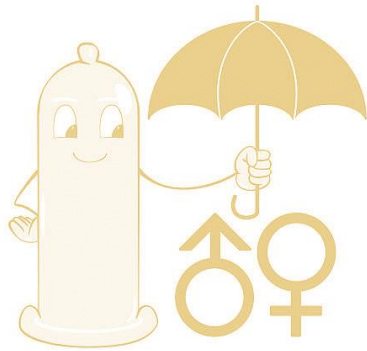


ML've Health Screening Packages

STD Packages (\$1188)



Medical Assessment

- Pre-Health Screening Detailed Questionnaire
- Medical History & Risk Profile Screening
- Doctor's Consultation
- Physical Examination
- Height & Weight
- Body Mass Index
- Blood Pressure Reading

Investigations

- Resting ECG

Evaluation & Report

- Post Examination Review & Recommendations
- Medical Report
- Health & Lifestyle Counselling

Laboratory Tests

Haematology Profile

- Full Blood Count
- PBF
- ESR

Renal Profile

- Urea
- Creatinine
- Sodium
- Potassium
- Chloride

Urine Analysis

- Urine FEME
- Stool Occult Blood
- Urine Microalbumin
- Urine Creatinine
- Urine Microalbumin/
Creatinine Ratio

Liver Profile

- Bilirubin
- Protein
- Albumin
- Globulin
- A/G Ratio
- ALT/SGPT
- AST/SGOT
- Alkaline Phosphate
- GGT

Hepatitis Profile

- Hep Bs Antigen
- Hep Bs Antibody
- Hep A IgG Antibody

STD Package

- Chlamydia and gonorrhoea
- Herpes simplex virus type 1 IgG,
virus type II IgG
- HIVAg/Ab screen
- VD (syphilis TP Ab)
- RPR &TPPA if syphilis reactive

Seminal Analysis

Urological Analysis

Erectile Dysfunction Scoring