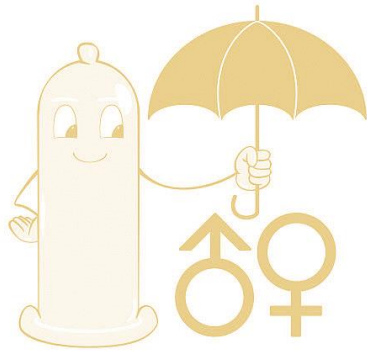


ML've Health Screening Packages

Prostate Health Care (\$1688)



Medical Assessment

- Pre-Health Screening Detailed Questionnaire
- Medical History & Risk Profile Screening
- Doctor's Consultation
- Physical Examination
- Height & Weight
- Body Mass Index
- Blood Pressure Reading

Investigations

- Resting ECG

Evaluation & Report

- Post Examination Review & Recommendations by Specialist
- Medical Report
- Health & Lifestyle Counselling

Laboratory Tests

Haematology Profile

- Full Blood Count
- PBF
- ESR

Renal Profile

- Urea
- Creatinine
- Sodium
- Potassium
- Chloride

Urine Analysis

- Urine FEME
- Stool Occult Blood
- Urine Microalbumin
- Urine Creatinine
- Urine Microalbumin/
Creatinine Ratio

Liver Profile

- Bilirubin
- Protein
- Albumin
- Globulin
- A/G Ratio
- ALT/SGPT
- AST/SGOT
- Alkaline Phosphate
- GGT

Urological Analysis

- Uroflow /RU
- PSA/PHI
- Flexible cystoscopy

Imaging Test

- US pelvic/prostate
- MRI prostate (add
charge if PHI abnormal)
- PET PSMA (optional, add
charges)